

DUAL-SHEAR™
by **SSI**

DUAL-SHEAR™

SHREDDERS FOR ALL APPLICATIONS

If you need a severe duty shredder able to process a wide range of materials including mixed materials with metal contamination, SSI's Dual-Shear™ shredder is what you've been looking for. The shredder outputs "strips" that are the width of the cutters, usually 1" to 3" wide. SSI's robust design includes direct drive, "floating" cleaning fingers, patented ACLS™, and auto-reversing on material overload that enables processing of the most difficult materials without damage to the shredding unit.

WHY use a Dual-Shear?

- Robust, high-torque shearing technology designed to process tough, compressible materials such as metals, carpet, tires, etc.
- Heavy-duty construction
- Low horsepower, energy efficient
- Wear-resistant cutters
- Shock protection
- Low-speed benefits—low noise, low dust, low heat generation, low operation and maintenance costs
- Minimum foundation requirements
- Bulk feed capability
- Minimal "fines" generation



SSI's Dual-Shear shredders are the ideal solution for:

- **Alternative Fuel/Refuse-Derived Fuel** – MSW, industrial waste, wood, paper, tires, plastics, carpet, textiles, etc.
- **Product/Security Destruction** – Paper/documents, hard drives, off-spec or out-dated goods, pharmaceuticals, electronics, plastic parts, etc.
- **Waste Treatment/Alternative Disposal** – Medical waste, radioactive materials, organics, paper fibers, MSW, industrial waste, etc.
- **Severe Applications** – Batteries, hazardous waste, etc.
- **Contaminated Materials** – Materials with diverse contamination.
- **Metal Materials** – Aluminum, ferrous, non-ferrous, metal turnings, steel drums.
- **Tires** – Passenger, truck, and OTR (off-the-road) tires.
- **Plastic** – Purgings, rolls and sheets, film, off-spec products, etc.

DUAL-SHEAR models



M55

Cutting chamber 23" x 31"
(W x L) (580mm x 760mm)

Hopper opening 42" x 51"
(W x L) (1055mm x 1290mm)

Optional lengths 25" or 40"
(635mm or 1025mm)

HP Range 30 - 40
(23-30kW)

Cutter thickness 1"
(25mm)



M70

Cutting chamber 28" x 40"
(W x L) (700mm x 1015mm)

Hopper opening 55" x 70"
(W x L) (1400mm x 1700mm)

Optional lengths 31" or 52"
(785mm or 1020mm)

HP Range 60 - 75
(45-56kW)

Cutter thickness 1.5"
(38mm)



M85

Cutting chamber 35" x 52"
(W x L) (890mm x 1315mm)

Hopper opening 59" x 67"
(W x L) (1500mm x 1710mm)

Optional lengths 40" or 63"
(1030mm or 1610mm)

HP range 100 - 150
(75-113kW)

Cutter thickness 2"
(50mm)



M100

Cutting chamber 41" x 63"
(W x L) (1065mm x 1600mm)

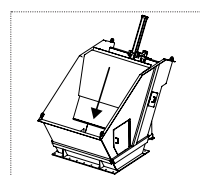
Hopper opening 62" x 88"
(W x L) (1580mm x 2225mm)

Optional lengths 52" or 75"
(1320mm or 1900mm)

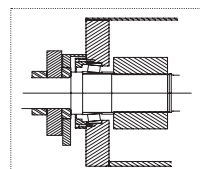
HP range 150 - 200
(113-150kW)

Cutter thickness 2"
(50mm)

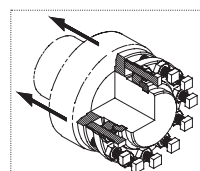
DESIGN features



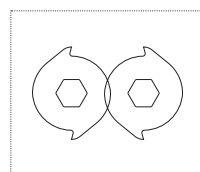
HOPPERS
Application-specific feed hoppers available, including patented ram feed assist.



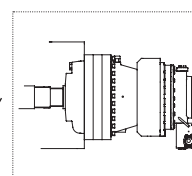
SEAL & BEARING PROTECTION
Proprietary "multiple-barrier" system, including a mix of conventional and labyrinth seals to prevent contamination.



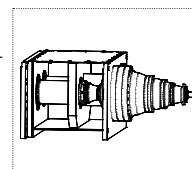
PATENTED ACLS™
SSI's "Advanced Cutter Locking System" maintains a tight cutter stack, minimizing maintenance requirements and prolonging cutter life.



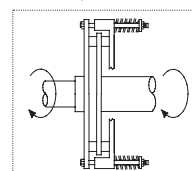
CUTTER CONFIGURATION
Application-specific cutter configurations.



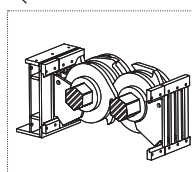
DRIVE CONFIGURATIONS
Electric, hydraulic and SmartDrive™ options available to suit specific needs.



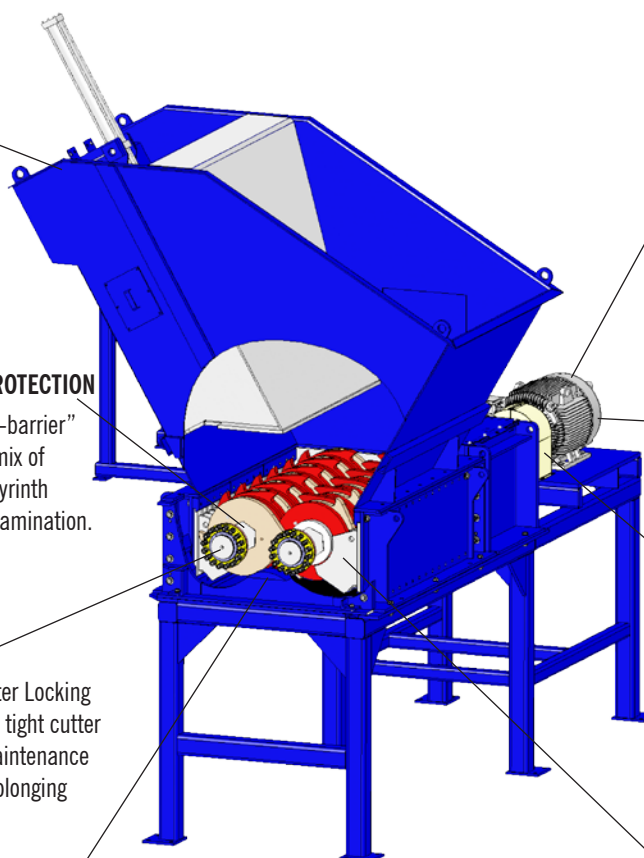
DIRECT DRIVE
Planetary gear boxes are splined directly into the drive shaft, amplifying torque and allowing greater flexibility of applications.



PATENTED SSP™
SSI's "Severe Shock Protection" system protects the drive system from damage during an event that instantaneously stops shredder shafts. (electric models only)



CLEANING FINGERS
Placed between each cutter and fitting closely around each spacer, the cleaning fingers keep shredded material from clogging the cutting chamber.



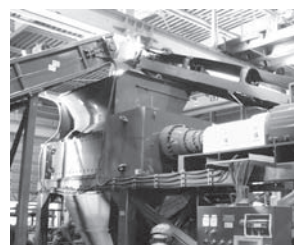
M120

Cutting chamber (W x L)	45" x 60" (1145mm x 1525mm)
Hopper opening (W x L)	65" x 87" (1650mm x 2210mm)
Optional lengths	52" or 75" (1320mm or 1905mm)
HP range	150 - 300 (113-226kW)
Cutter thickness	2" (50mm)



M140

Cutting chamber (W x L)	52" x 75" (1320mm x 1905mm)
Hopper opening (W x L)	42" x 51" (1055mm x 1290mm)
Optional lengths	101" (2555mm)
HP range	300 - 400 (226-300kW)
Cutter thickness	2" (50mm)



M140D*

Cutting chamber (W x L)	52" x 75" (1320mm x 1905mm)
Hopper opening (W x L)	42" x 51" (1055mm x 1290mm)
Optional lengths	101" (2555mm)
HP range	300 - 400 (226-300kW)
Cutter thickness	2" (50mm)



M160D*

Cutting chamber (W x L)	64" x 75" (1625mm x 1905mm)
Hopper opening (W x L)	96" x 144" (2440mm x 3660mm)
Optional lengths	101" (2555mm)
HP range	400 - 800 (300-600kW)
Cutter thickness	2" (50mm)

* The "D" denotes Dual Drive.

WHAT **NEEDS** SHREDDING?™

Obviously your goal isn't to be the proud owner of a shredder; it's to run a successful business. A shredder is just a tool. SSI's goal is to help you pick the right tool. To do this well, we need to talk to you about your goals and needs. When you call, here are some of the things we'll ask:



WHAT DO YOU NEED TO SHRED?

WHAT IS YOUR DESIRED PRODUCTION RATE?

HOW WILL THE SHREDDER BE FED?



WHAT PARTICLE SIZE DO YOU NEED?

WHAT IS THE END USE OF THE SHREDDED MATERIAL?

Landfill? Alternative Fuel? Recycling? Manufacturing?



SSI Shredding Systems, Inc.

Tel: (503) 682-3633 | www.ssiworld.com | sales@ssiworld.com

© Copyright 2012 SSI Shredding Systems, Inc. All rights reserved.
Illustrations, specifications and descriptions presented reflect standard product at time of publication and are subject to change without notice. Dimensions are approximate. Photographs may include optional equipment and accessories.